

# WILDING X



1	Ross Pavilion & West Princes Garden	4
2	Rees Street Park	9
3	Skylanding	14
4	Float, Flutter, Flow	19
5	Bilbao	24
6	DIB	29
7	Floating Island	34
8	David Kordansky Gallery	39
9	Garden by Rooted	44
10	Newfields Children's Garden	48



# Selected works





# Ross Pavilion & West Princes Street Gardens

Edinburgh, Scotland

1st Place International Design Competition

Location: Edinburgh, Scotland, UK

Date: 2017

Size: 16 acres

Scope: Landscape Architecture, Masterplan, Urban Design, Stakeholder Engagement

Collaborator: WHY Architecture, GRAS, Noel Kingsbury, BOA, ARUP







Their proposal is a landscape scheme that is really more like an energy field: using animation and drama as well as open vistas, they transform the Gardens and create an experience that is much freer and organic. As is their style, they conscientiously sampled local opinion, and have come up with a design proposal that is engaging and refreshing.

MALCOLM READING, Competition Director

The character of the West Princes Street Gardens is rejuvenated through the reimagination of the Ross Bandstand from a theater in a garden to a garden theater. The project revitalizes the old with new elements of design, creating a place that is at once recognizable and excitingly refreshed. It aims to mend and connect all: old city with new, nature and culture, urban life and nature, and imbue the Gardens with a new sense of magic and beauty.









A new arrangement of picturesque pathways meander throughout the gardens, bringing the space to life and creating a botanical loop from the embankment to the Royal Mile. Reclaimed stone seating in a meadow of grasses creates a ruin-esque amphitheater for the new performance space and invites the concertgoers and community to connect with nature as they explore this new biodiverse landscape, full of butterfly-supporting native plants.

The chosen design makes the most of the natural surroundings of Princes Street Gardens and focuses on connecting people to the city, the stage and the view of Edinburgh castle.

Donald wilson, Edinburgh city council  
Culture and communities









Rees Street Park

Toronto, Ontario

1st Place International Design Comeptition  
Location: Toronto, Canada  
Date: 2018  
Size: 2.3 acres  
Scope: Landscape Architecture  
Collaborators: WHY Architecture, Phyto, ARUP, Brook McIlroy

‘An extension of city and lake’  
– Waterfront Toronto.





For Rees Ridge, the jury was impressed with its bold and thoughtful design, which includes a large ridge that changes the relationship of the waterfront to the downtown. The team’s multi-functional design allows for year-round activity and includes exciting potential for future programming and events that will meet the needs of local residents.

OFFICIAL STATEMENT, Waterfront Toronto

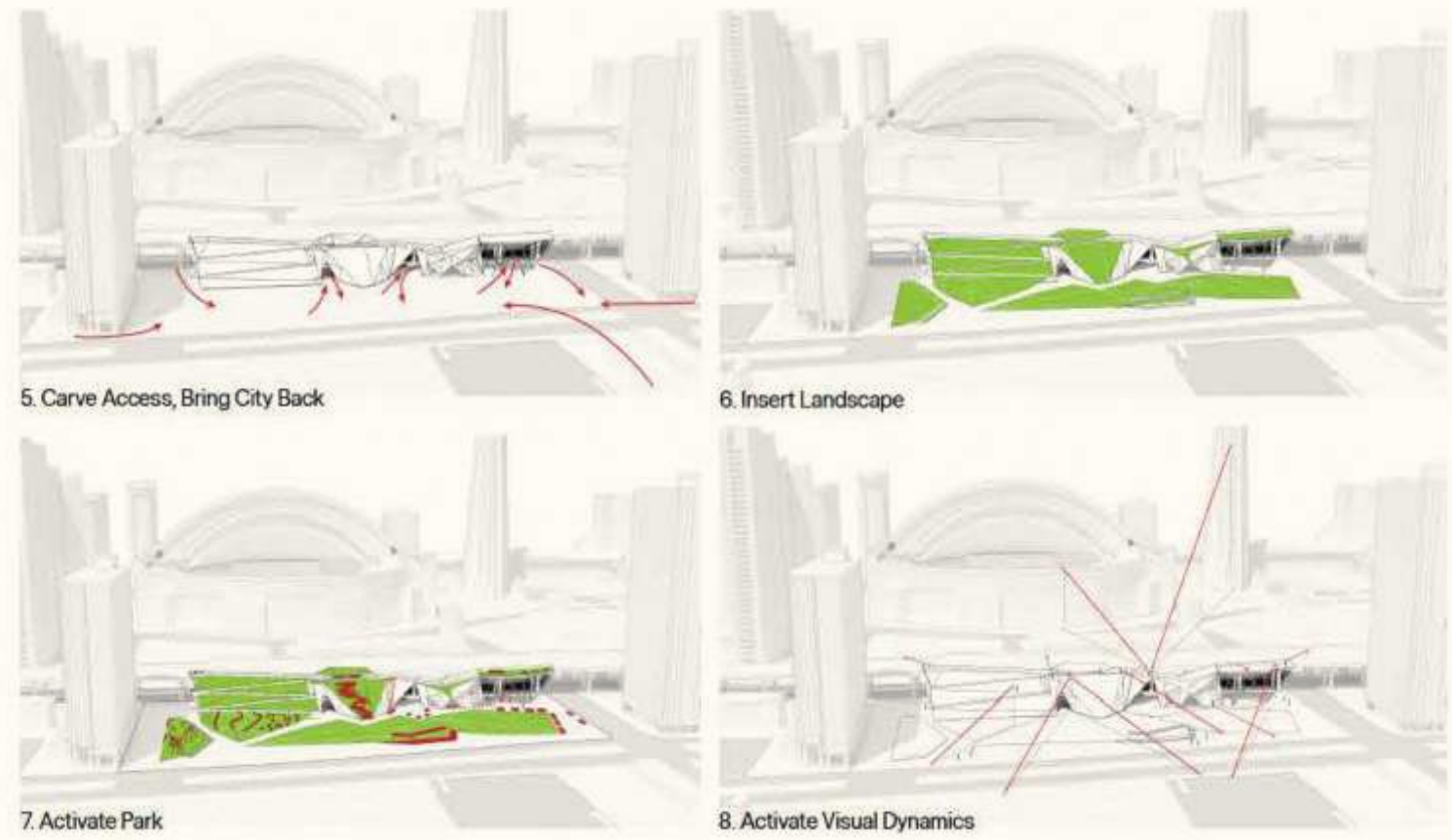
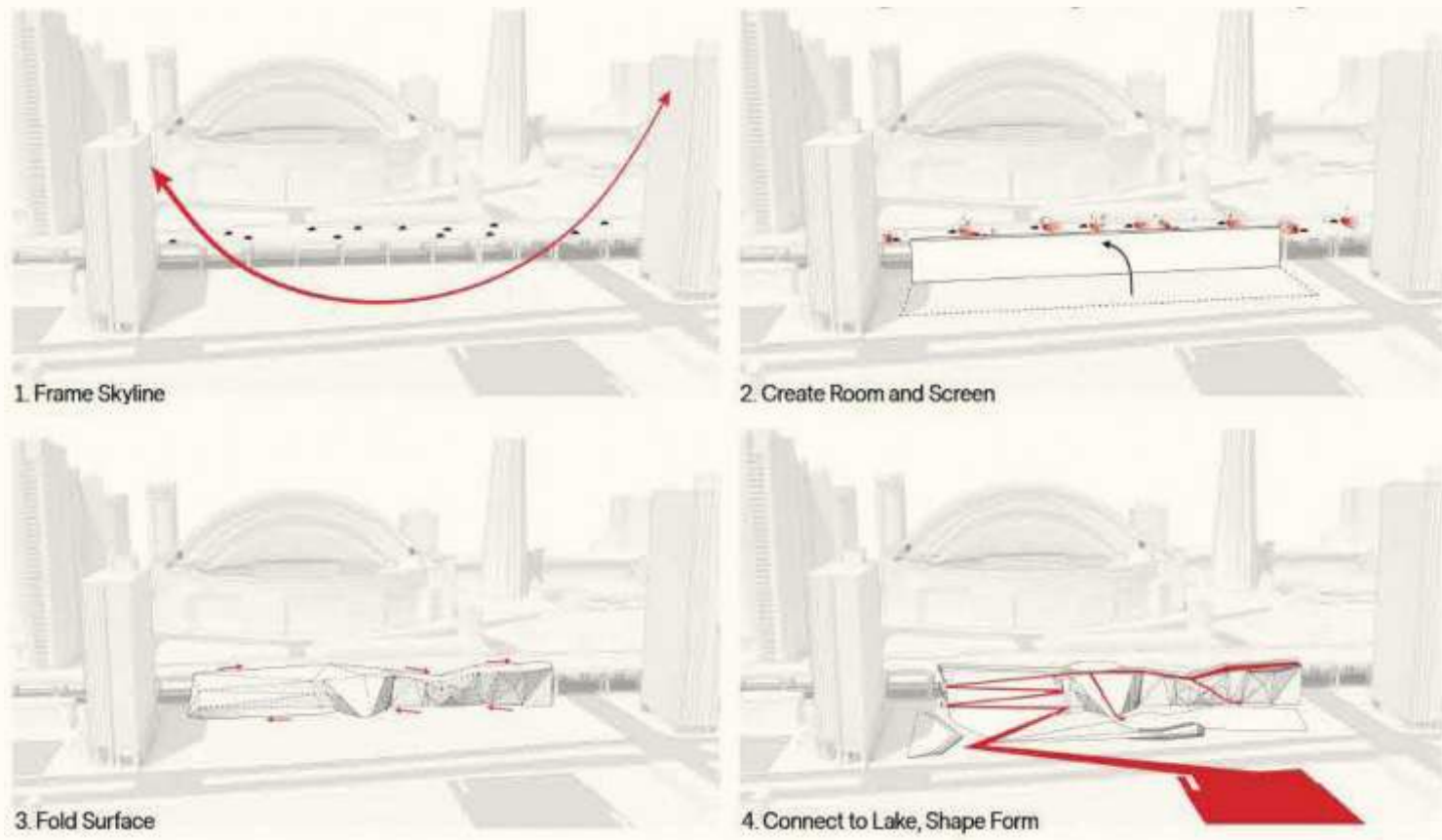
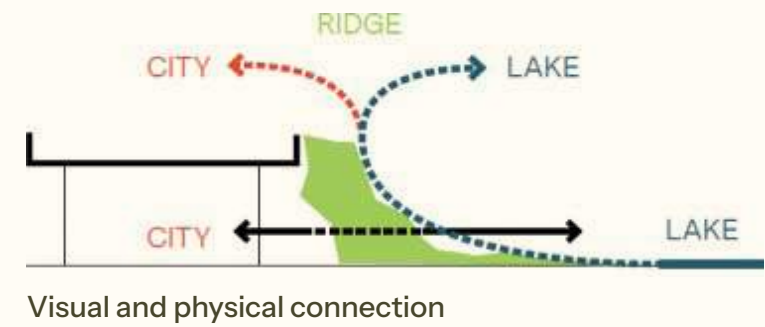
Rees Ridge is as much an extension of the city as it is an extension of the lake. In nature, the bluff is the interface where water and land meet—a liminal space where a gradient of activities and natural communities coexist and a new future begins.

With dramatic three-dimensionality that hosts a dynamic range of programs and amenities, this innovative interpretation of the Toronto Bluffs connects visitors to the city and lake, and through a rich botanical and programmatic experience, to a vibrant new urban park experience that will activate the adjacent waterfront.





Rees Ridge fills a gap in the dynamic Toronto skyline.  
It buffers the ever-present noise of the Gardner Expressway  
and cleans the air.





The inclusion of Toronto bluff plant communities within the Ridge maximizes biodiversity in the city and creates a new botanical experience that changes from Grey to Green.









# Skylanding

by Yoko Ono

Chicago, Illinois  
‘A Landmark for peace’

Location: Chicago, IL, USA  
Date: 2014 - 2016  
Size: 5 acres  
Scope: Masterplanning, Landscape Architecture, Project Management,  
Artist Collaboration  
Collaborators: Yoko Ono, Chicago Parks District, Project 120





“I want the sky to land here, to cool it,  
and make it well again.”

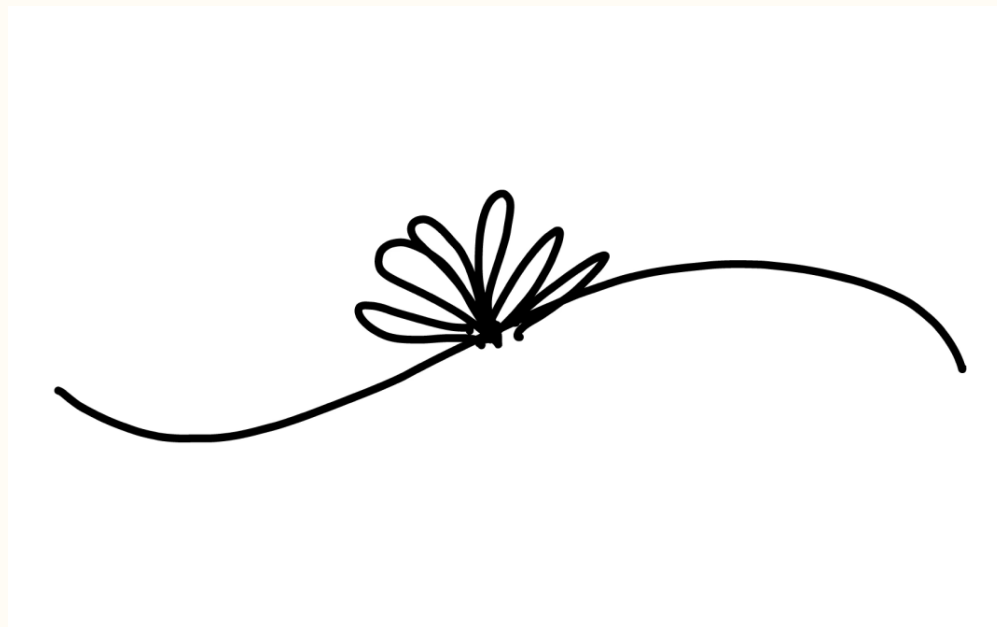
Yoko Ono, artist







On the site of the former Japanese Pavilion in Jackson Park, a lotus is nestled in the infinite. Envisioned by Yoko Ono and designed by Wilding X, the lotus is imagined as a cooling force in this space of former conflict, a drip of sky that has landed on earth to heal and rejuvenate. The landforms hold this space of peace and reflection, inviting visitors to inhabit them- to lay on the earth and take notice of the cycles the of the seasons as they are captured and reflected in the ever-changing petals.







## Mended Petal

Art Institute of Chicago, Pritzker Garden

Mended Petal is the 13th petal from the artist's installation Skylanding, a 12-petal lotus sculpture in Chicago's Jackson Park that rises from the ashes of the Phoenix Pavilion, which was a gift from Japan to the people of Chicago following the 1893 World's Columbian Exposition and was destroyed by arson in 1946. In contrast to the smooth petals of Skylanding, Mended Petal shows the seams of its repair, commemorating the ground-healing ceremony the artist held on June 12, 2015, to prepare the site of the lost Phoenix Pavilion for new work.

Medium: Stainless steel

Dimensions: 365.8 × 152.4 × 91.5 cm (144 × 60 × 36 in.)



“The idea is that Skylanding will become a place of congregation and contemplation”.

Rahm Emanuel, Mayor, City of Chicago





Voguer, Voler, Flotter  
(Float, Flutter, Flow)

2019 Festival International Des Jardins  
Domaine de Chaumont-Sur-Loire, France

1st Place International Design Competition  
Location: Domaine de Chaumont-sur-Loire, France  
Date: 2019  
Size: 2,700 SF  
Scope: Landscape Architecture, Fabrication, Installation  
Sponsors: Feather Factory, University of Pennsylvania School of Design

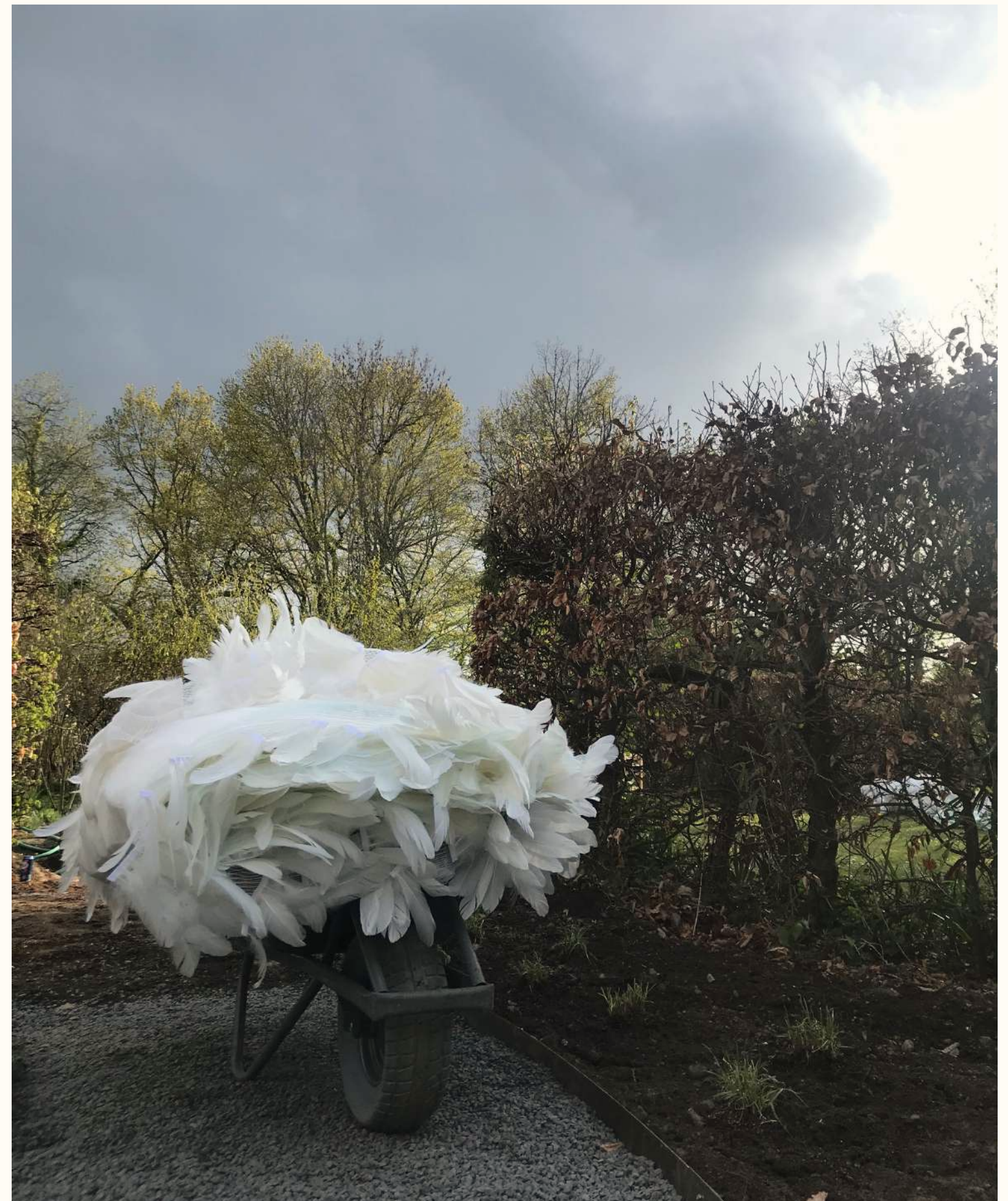
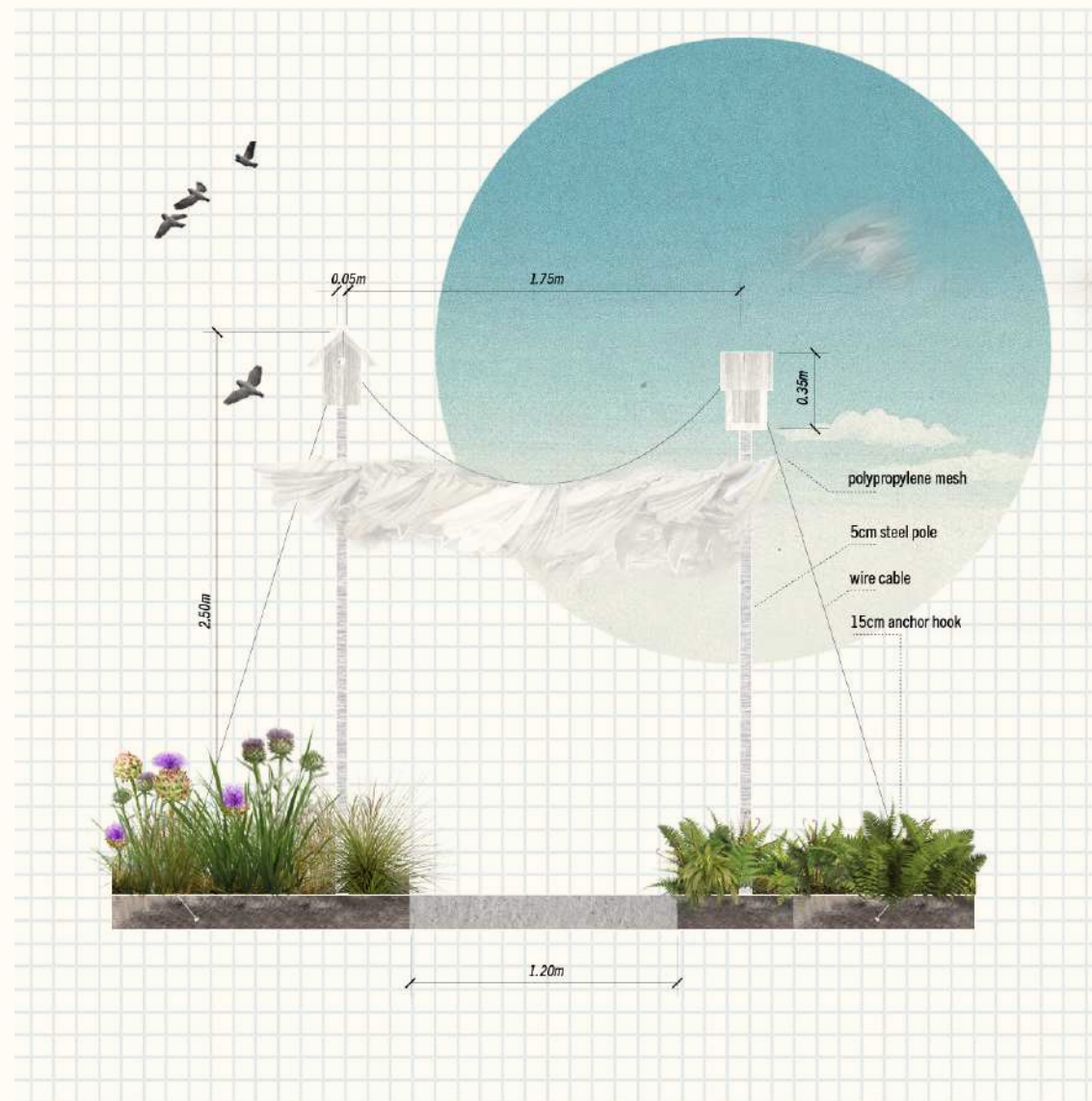




If nature is complex, extraordinarily beautiful and a source of life, then paradise is simply a representation of it. Raised to a state of higher consciousness, this sensory experience illustrates the dialectic between the human and the wild.











This garden invites us to restore our relationship with beauty and nature. What could be more wonderful to achieve this than a cloud of feathers above our heads? Feathers are thermal insulators, filter UV rays, are watertight and enable flight, among other things.

They have even revealed climate change through the carbon in their structure. Beneath this white canopy, a circular pond accommodates two black swans. The garden is overrun with plants, blueberries, viburnums and artichokes which provide food for the birds, these ancestors of the gardens of paradise.



“All the beauty is in the feathers.  
I almost think a feather is the masterpiece of nature.”

ALFRED RUSSELL WALLACE

Among the various species of birches, ferns and grasses which  
abound, an olive harvest net, worn out scaffolding and pieces  
of asphalt have been recycled so that life and beauty are  
endlessly reborn.





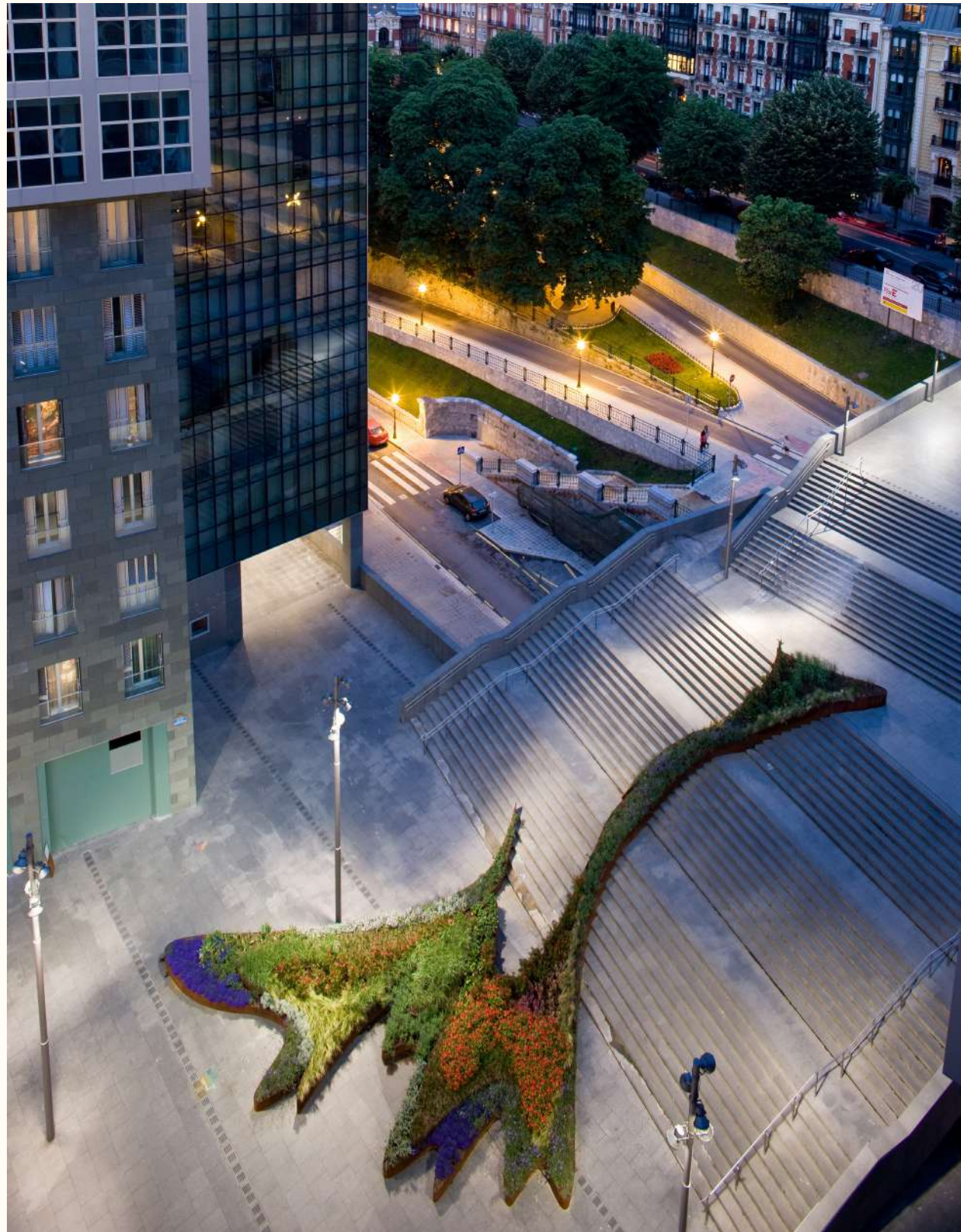
1st Place International Design Competition  
Location: Bilbao, Spain  
Date: 2007 - 2014  
Size: 6 Acres  
Scope: Masterplanning, Landscape Architecture  
Collaborators: Mark Thomann & Kira Appelhans with Balmori Associates  
Photos: Iwan Baan





## The Garden That Climbs The Stairs 2009 Bilbao Jardin Festival.

The garden climbs the stairs, running in undulating lines of different textures and colors. Envisioned as a dynamic urban space; it moves in time and with the seasons. Its lush planting cascades down as though the garden was flowing or melting, bleeding the colors into each other – inspired by Robert Smithson’s asphalt pours (and a life around asphalt). In one gesture, it narrates a story of landscape taking over and expanding over the city, therefore transforming the way that the stairs and the space is perceived and read by the user.





## Green Over Grey

Like the famous ‘Spanish Steps’ in Rome, the garden is not only designed for visitors to ascend and descend, but for them to linger.

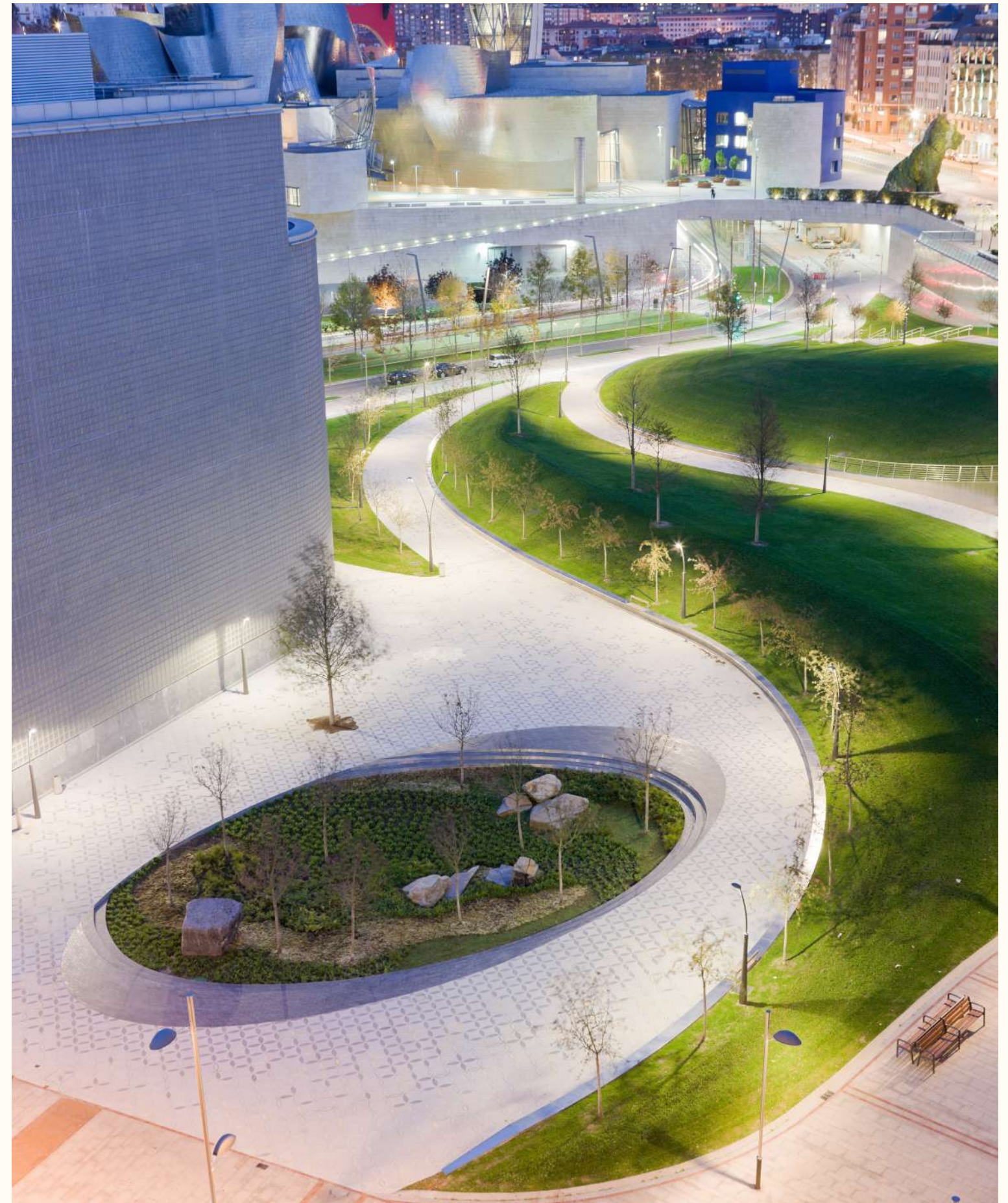




## Bilbao Campa De Los Ingleses & Plaza Euskadi



The park flows from the Guggenheim Bilbao Museum, unifying the Abandoibarra, the Old City, and the Nervión River. The Park's design was a study in movement; graceful lines shape a topography for pedestrians to navigate the ten meter (33 feet) elevation difference between the city above and the Nervión River below. The paving contains an additive called GeoSilex® which absorbs CO2 and the local newspaper referred to the park as “a new lung for the city.”









# DIB Contemporary Art Museum

Bangkok, Thailand

Location: Bangkok, Thailand  
Date: 2025  
Size: 132,000 SF  
Scope: Landscape Architecture  
Collaborators: WHY Architecture, A49, Arup, Chon Supawongse,





Community and Artistic Engagement

DIB’s purpose extends beyond exhibition spaces, with dedicated areas for artist studios, workshops, and community events that foster artistic development and public interaction. This includes event venues for performance art, screenings, and cultural gatherings, ensuring that the center can support a broad array of art forms and engagement levels. The versatile layout and acoustics are designed to adapt to these diverse functions, enhancing Bangkok’s cultural landscape with a space that is as functional as it is inspiring. Striking a balance between the site’s historical character and the dynamic needs of a contemporary audience.

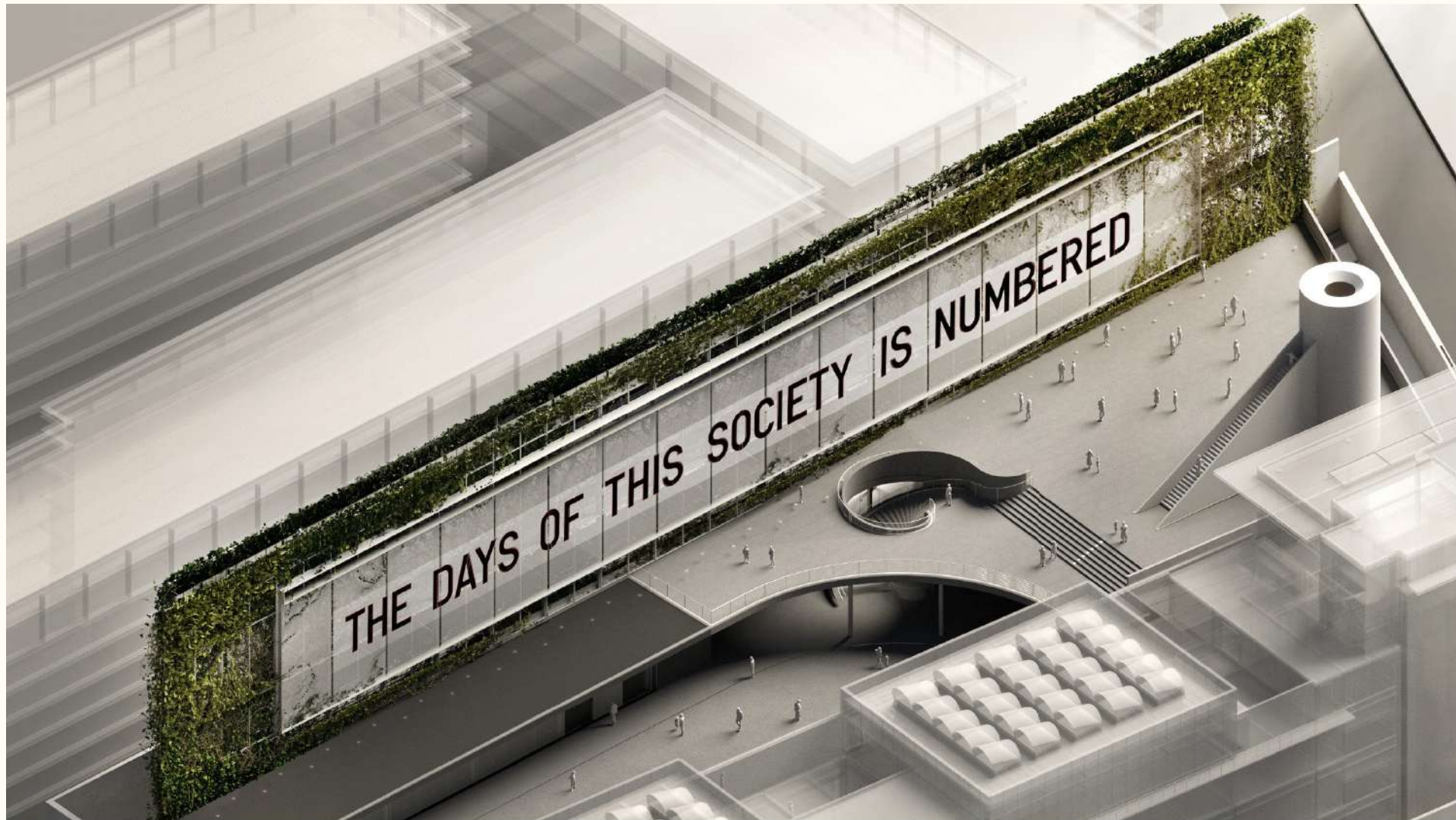




Our intent was to reflect the city's evolving role as an international art destination, crafting a space that fosters dialogue among artists, curators, and the public, while supporting both community engagement and creative exchange.







DIB's layout offers a balanced mix of public and private spaces, where interconnected zones include openair courtyards for community interaction and intimate gallery settings for quieter reflection. This structure allows visitors to flow between larger public areas and more secluded, immersive spaces, creating an engaging experience that reflects the diverse needs of a contemporary audience.







# Floating Island to Travel Around Manhattan Island

## Robert Smithson

New York, New York

Location: New York, NY, USA

Date: 2005

Size: 2700 SF

Scope: Landscape Architecture, Fabrication

Collaborators: Mark Thomann with  
Balmori Associates, Whitney Museum,  
Minetta Brook, Nancy Holt, Jon Rubin,  
James Cohan Gallery

Film: ONE DRAWING IS ENOUGH

Director: DeeDee Halleck, Isabella, Lawkins  
2024

<https://vimeo.com/910900549>







## STUDY FOR FLOATING ISLAND TO TRAVEL AROUND MANHATTAN ISLAND, 1970.

Robert Smithson, pencil on paper. 19 x 24

Collection of Joseph E. Seagram & Sons, Inc

Thirty-five years after it was first conceptualized, artist Robert Smithson's "Floating Island To Travel Around Manhattan Island" was brought to life in conjunction with the Whitney's Smithson Retrospective. Never realized during the artist's lifetime, Floating Island is a 30-x-90-foot barge landscaped with earth, rocks, and native trees and shrubs, towed by a tugboat around the island of Manhattan.

The project was a collaboration with Nancy Holt and realized by Mark Thomann with Balmori Associates, building on a body of work inspired by Smithson. A film was produced for the 20th anniversary in 2025.



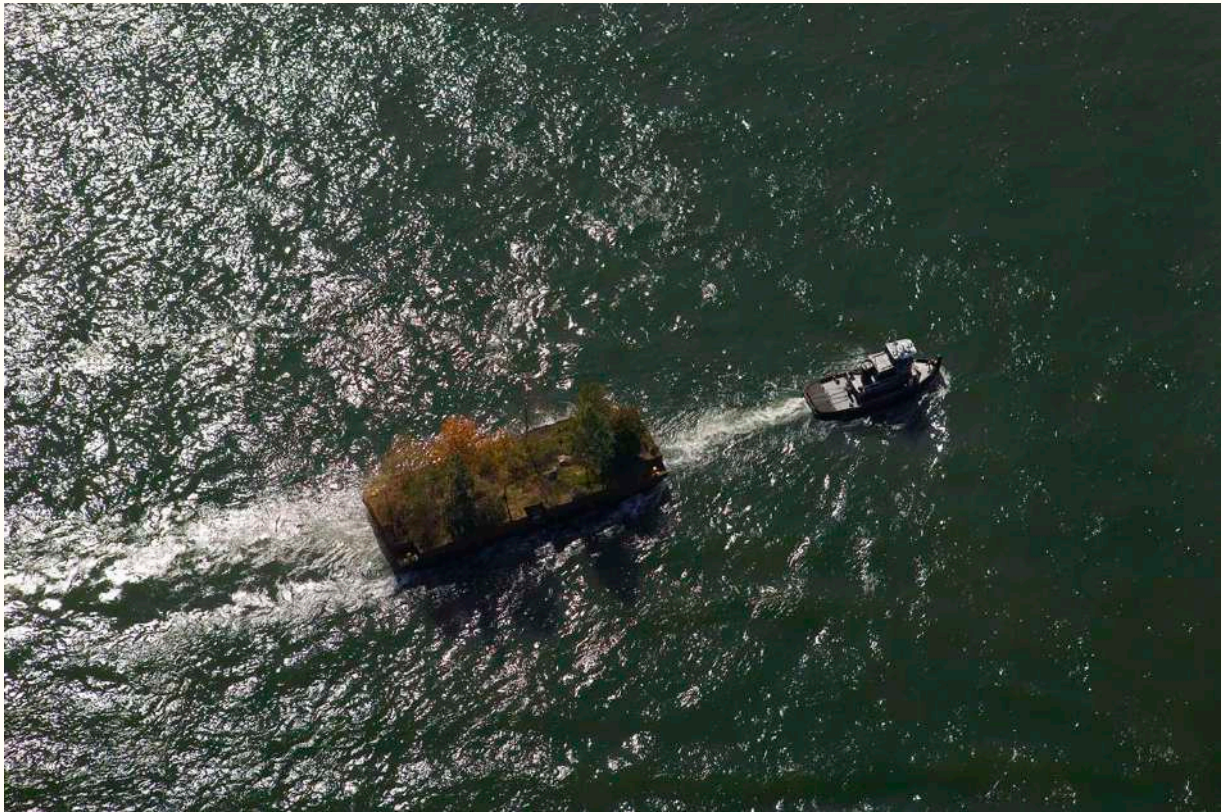






WILDING X

SELECTED WORKS



SMITHSON FLOATING ISLAND







David Kordansky Gallery

Los Angeles, California

Location: Los Angeles, CA, USA  
Date: 2014-2021  
Size: 13,000 SF  
Scope: Landscape Architecture  
Collaborators: WHY Architecture

‘They understand architecture as experience and – foremost – as shared experience.’

-David Kordansky



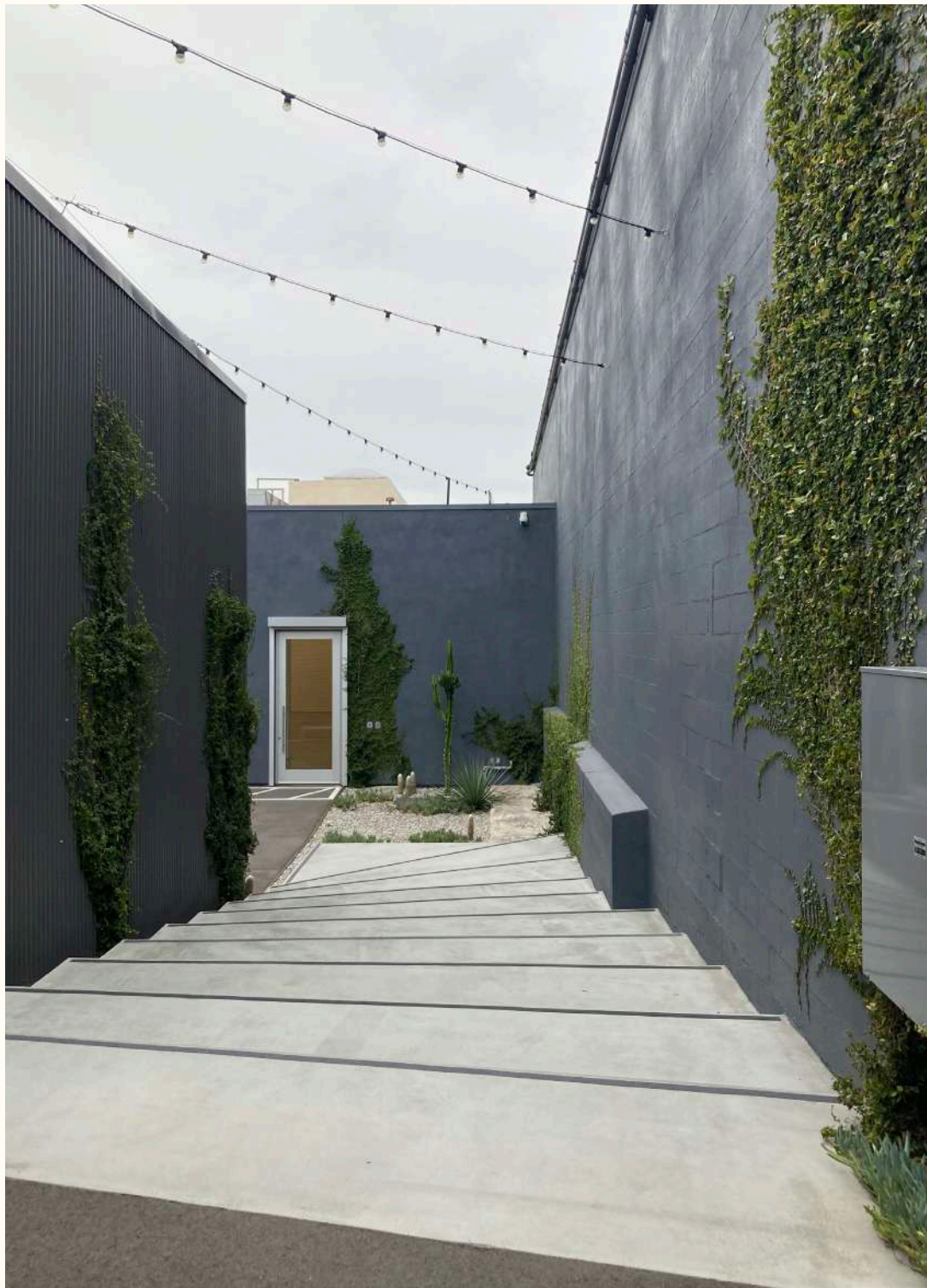


‘Balance between a sense of spectacle, and feelings of warmth and intimacy; bold landscaping and minimalist facades; as well as shared zones for exchange, and personal space for freedom and agency.’

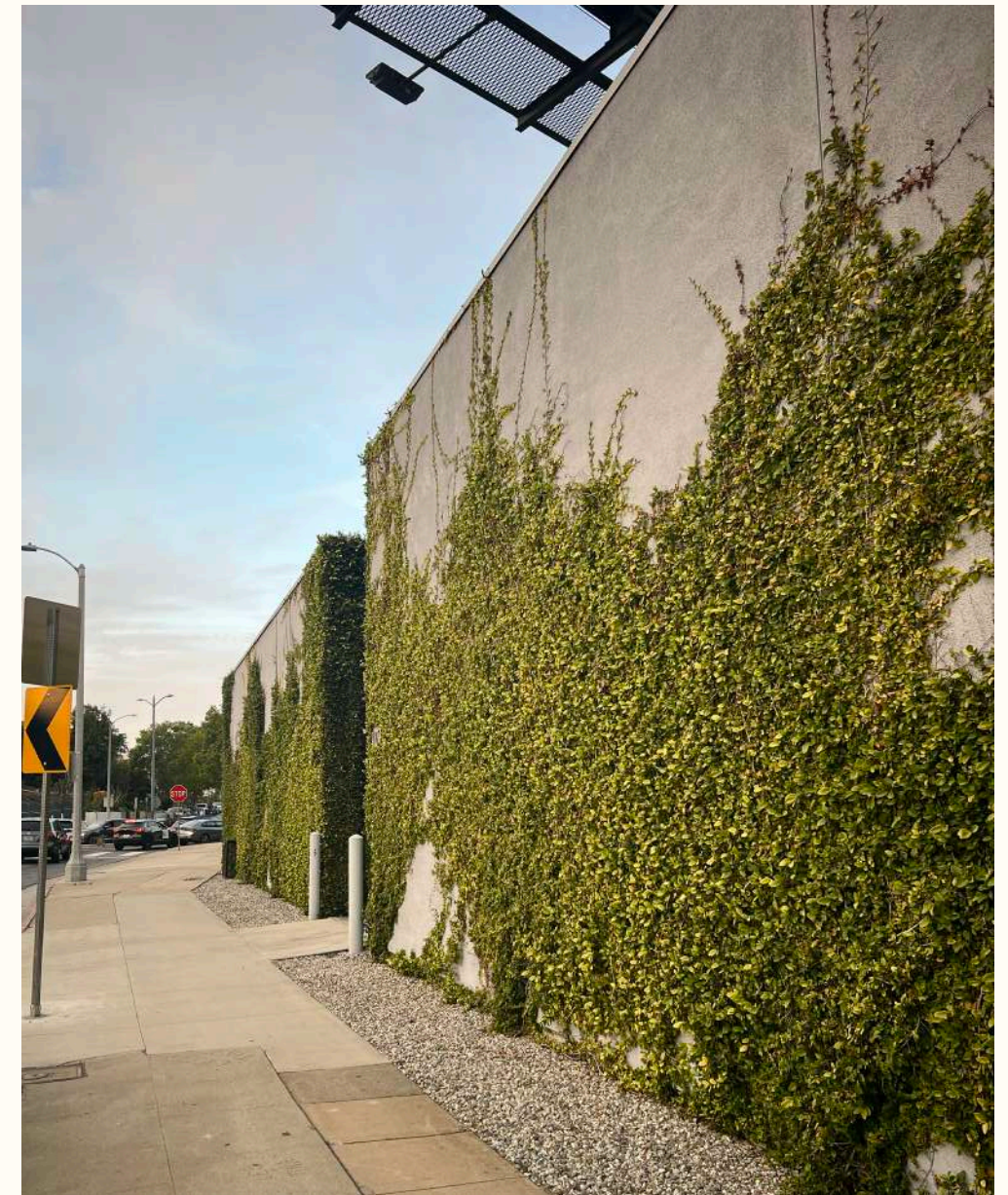
-David Kordansky







Dark green climbing fig plants absorb the surface area of the gallery and courtyard walls, building a feeling of groundedness into the property. Sculptural plantings of cacti, blue chalk sticks, and African candelabra add character and drama to this drought-resistant garden. The material palette creates a raw but inviting setting for the exhibition of contemporary sculpture.













# Garden by Rooted

Los Angeles, California

Location: Los Angeles, CA  
Date: 2024 - Ongoing  
Size: 3 acres  
Scope: Masterplanning, Landscape Architecture  
Collaborators: WHY Architecture





Located in the Crenshaw neighborhood of LA, The Garden emerged from the parking lot of a former dry cleaner. The project is a raw, lush re-imagining of what it means to re-use a site. Every surface of The Garden is productive for food, community or environment.



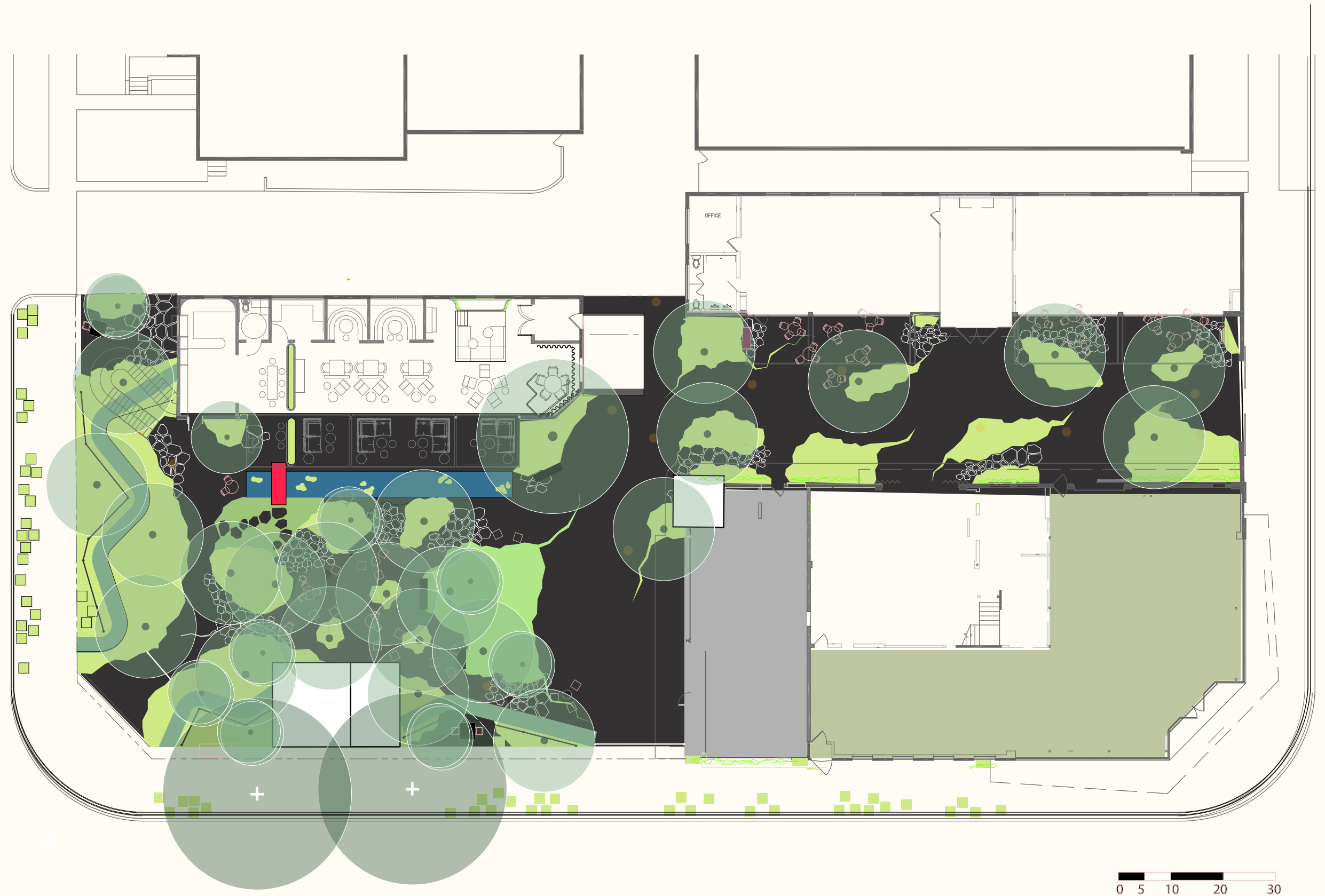
WILDING X

SELECTED WORKS



GARDEN BY ROOTED







A space of connection and spontaneity, the project hosts an edible garden which will foster not just community, but sustainability and a connection to the earth while native plants will sustain local pollinators.



Existing asphalt is given new life as paving stones, retaining walls and benches. It is a space where innovation meets nature, where creativity flourishes, and where connections grow along with the plants.



# Newfields Children's Garden

Indianapolis, Indiana

Location: Indianapolis, IN, USA  
Date: 2019 - Ongoing  
Size: 2.5 acres  
Scope: Masterplanning, Landscape Architecture, Public Engagement





Newfield's Children's Garden is a space for the exploration of art, architecture, and nature. Inspired by Indiana's historic quarry landscapes, the project explores the potential for unstructured play and exploration in a raw, magical space inhabited by both art and native plant communities. By enabling visitors to engage with the garden using all their senses, it aims to spark discovery and encourage children, teens and their grown-ups to develop a long-term relationship with nature. As space for community in addition to museum visitors, it will be a place to experience healing, joy, and connection.

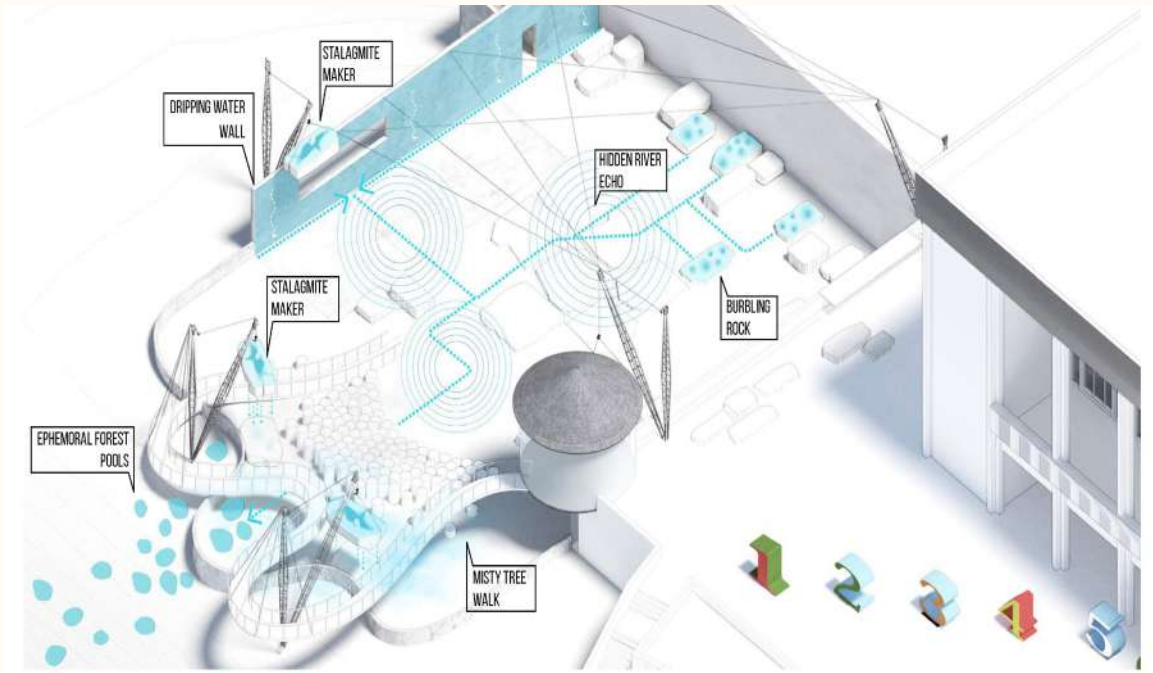








During a 6-month community engagement, over 500 children and teens shared their thoughts about the design for a Children’s Garden. Using VR experiences, manipulable models and drawing activities we moved beyond the traditional model of conference room engagement and took our questions out into the neighborhoods. The foundation of the engagement was a commitment to building awareness and understanding of diverse groups, promoting equal opportunities for underrepresented people, and a desire to create environments that are inclusive and that foster an understanding and appreciation of all people.









Thanks